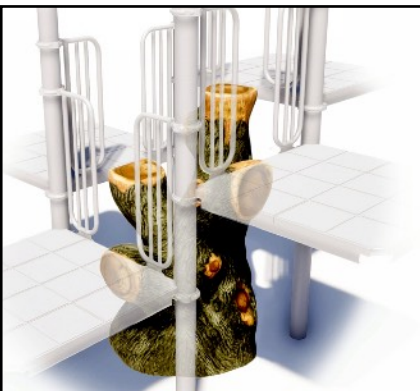




A fun themed climber with varying degrees of climbing difficulties. Constructed of durable Glass Fiber Reinforced Concrete (GFRC). The unique design allows for 360 degrees of climbing, integrated handholds, realistic texture. Choose a variety of designs from our Rope Links (8000001, 8000200 thru 8000205) to attach to the Big Oak Climber w/Rope Tabs.



1000259 Big Oak Climber

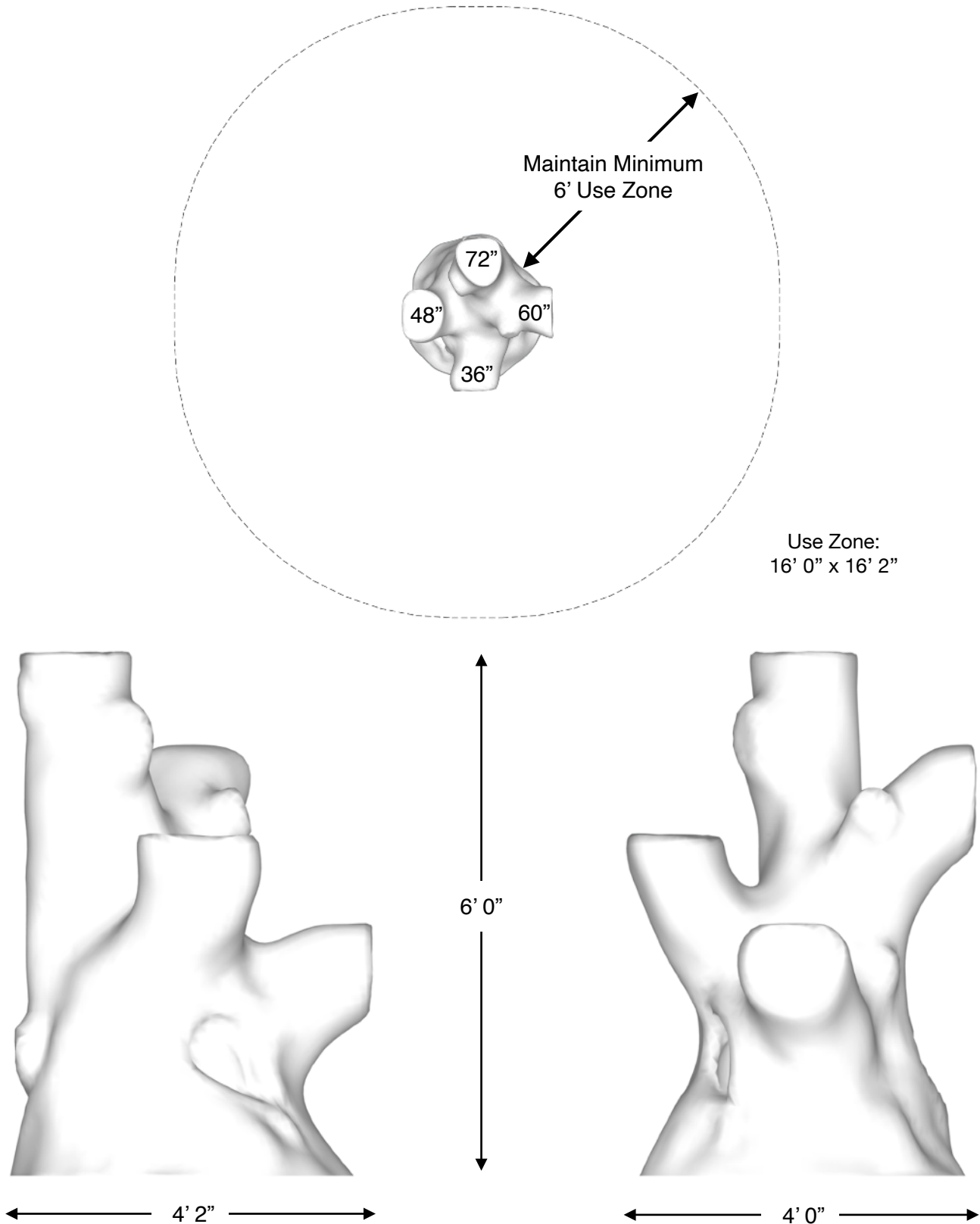
L: 4' 0"
W: 4' 2"
H: 6' 0"
1,600 LBS

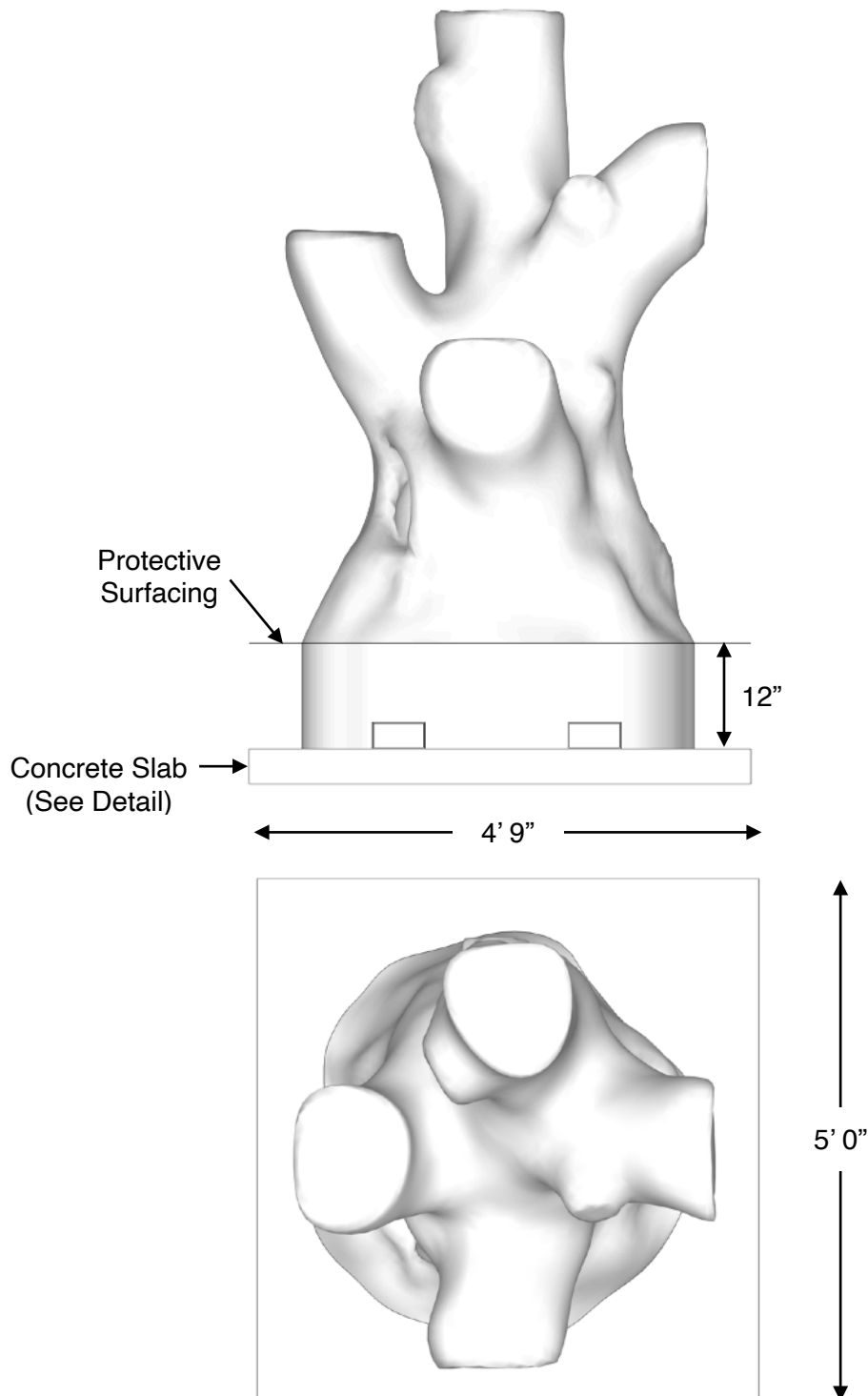
Modular Design
Connects to various
deck heights



1000307 Big Oak Climber w/Rope Tabs

Can be Linked with
Rope Climbers

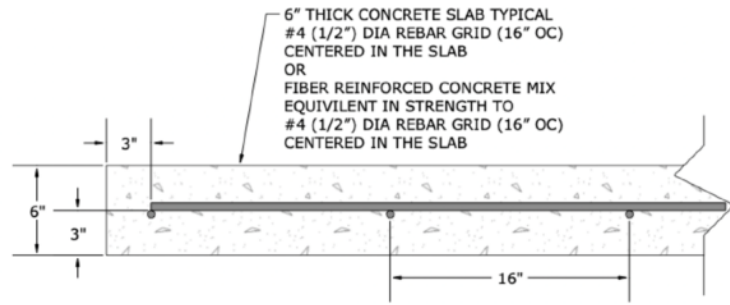




If you determine that less than 12" of surfacing is required, make sure the top of the concrete slab is 12" below the top of the protective surfacing.

NOTES PRIOR TO CONSTRUCTION:

- Use appropriate equipment to lift and move the play equipment.
- Check local codes and requirements prior to digging or installing any equipment.



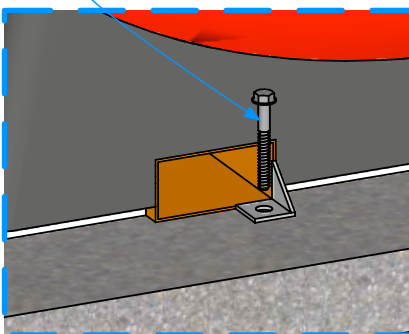
TYPICAL 6" CONCRETE SLAB DETAIL (NOT TO SCALE)
CHECK LOCAL SOIL CONDITIONS.



EXAMPLE OF
COMPONENT



ANCHOR BOLT
SEE CHART



NOTE: Read installation instructions thoroughly before starting installation process.

Step 1: Lay out the area and prepare the site for install. Concrete must be installed over a solid, level base. Check local soil condition and codes. See product installation instructions for minimum use zone requirements to ensure proper spacing and adequate surfacing area.

Step 2: Pour a concrete base for the component. Refer to the typical concrete slab section in this document. The concrete should be flush with the ground level. Allow time for the concrete to completely cure before continuing.

Step 3: Using an appropriate forklift or boom, place component into final installation location. See the hardware recommendation for information on anchoring equipment down to your concrete slab. Refer to the surfacing manufacturer for installation of an approved impact attenuating play surface around the component with a minimum use zone in every direction.

Step 4: Locate your anchor bolts, supplied. Using the proper standard drill bit size noted in the installation table, drill the concrete to the appropriate hole depth through the mounting holes.

Step 5: Insert the anchor bolt into the hole and tighten until the bolt is fully seated. Do NOT over tighten the anchor bolts.

Note: See separate installation instructions for Rope Link when installing Big Oak Climber product number 1000307.

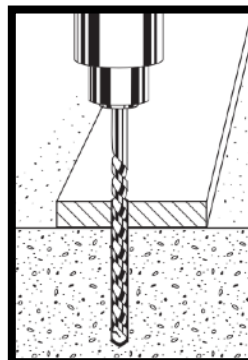
Included Items:

Item	Description	Quantity
Big Oak Climber	Play Equipment	1
Anchor Bolt 5/8" x 4"	Mounting Hardware	4

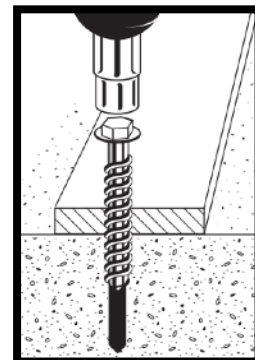
Anchor Bolt Installation:

Anchor Bolt Size	ANSI Standard Drill Bit Diameter	Anchor Head (Socket Size)	Minimum Embedment	Hole Depth
1/2" x 3"	7/16"	3/4"	2 1/2"	3 1/2"
5/8" x 4"	1/2"	13/16"	3 1/2"	4 1/2"
5/8" x 6"	1/2"	13/16"	5 1/2"	6 1/2"

Step 1: Drill

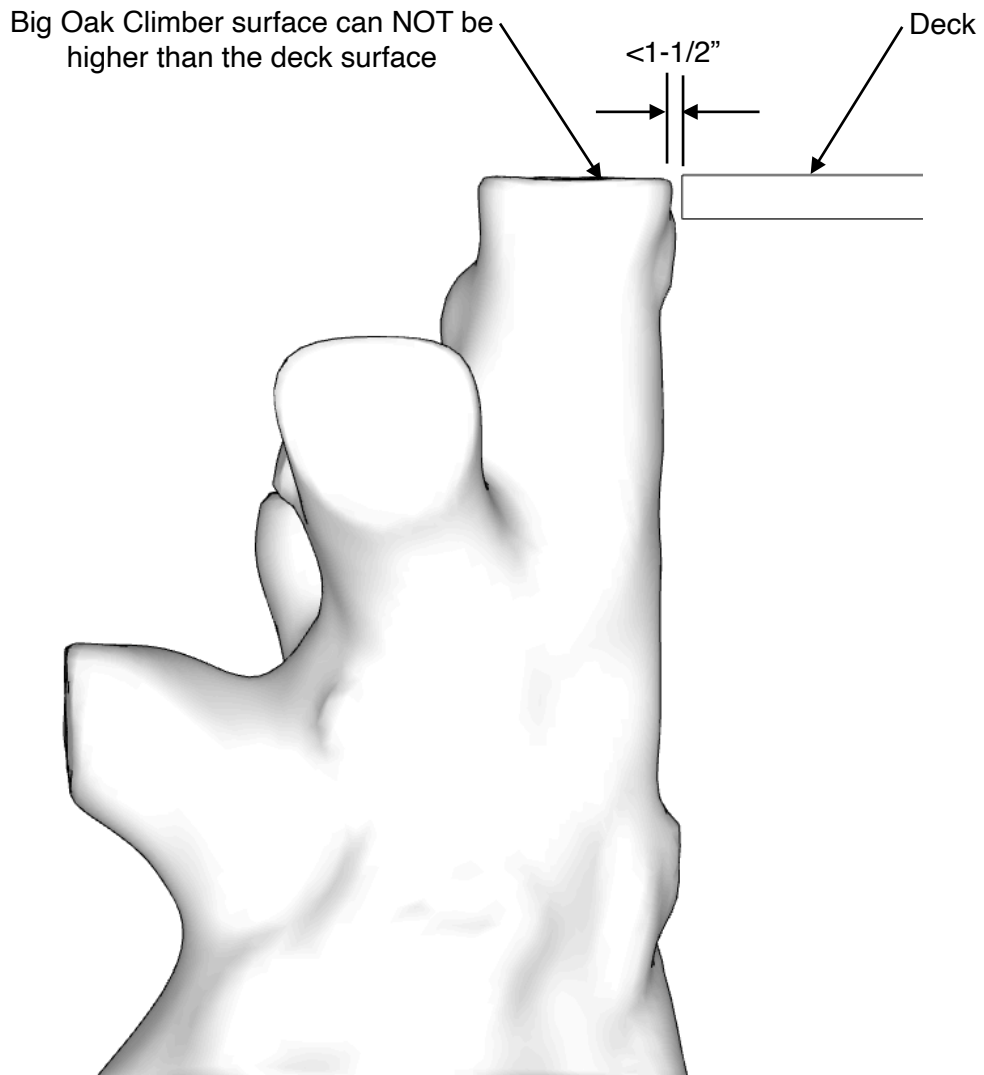


Step 2: Anchor



NOTE: Always wear eye protection appropriate to the task at hand.

Configured Big Oak Climber to deck: When using the Big Oak Climber as a deck attachment, the climber surface adjacent to the deck surface should be flush with the deck surface or less (up to 1"). The Big Oak Climber surface should NOT be higher than the deck surface.



Big Oak Climber to Deck